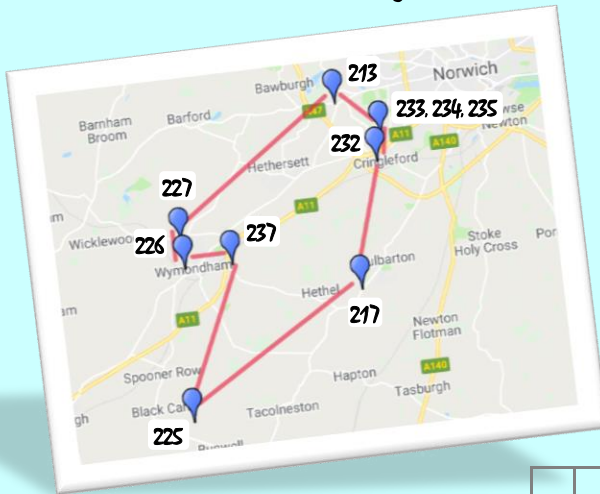


South Norfolk Art Trail



COME & MEET US
Norfolk & Norwich
Open Studios
25 May - 9 June
2019!

South Norfolk artists & the children of Browick Road Primary School Wymondham join together to offer you an inspirational colourful trail of stunning arts and crafts – drawing, glass, mixed media, mosaics, painting, photography, printmaking, textiles & more.

For artists' full details, address and phone, see printed NNOS brochure or go to <https://www.nopenstudios.org.uk/brochure>

	Anna Martin (213)	Caroline Evans (217)	Frances Overy (225)	Clarissa Upchurch (226)	Vera Cooke (227)	Penny Coult (232)	Carol Hardcastle (233)	Clare Insall (234)	Caroline Taylor (235)	Browick Road School (237)
Visit four or more studios by 9 June to be entered in a prize draw for a piece of our lovely artwork...	Sat 25 May	✓	✓		✓	✓	✓	✓		
	Sun 26 May	✓	✓	✓	✓	✓	✓	✓		
	Mon 27 May	✓	✓	✓	✓	✓	✓	✓		
• Simply ask the artist/studio to initial & date when you visited	Sat 1 June			✓	✓	✓	✓	✓		
	Sun 2 June	✓		✓	✓	✓	✓	✓		
• Add your contact details	Thu 6 June		✓							
	Fri 7 June		✓							
• Once you've visited four studios, leave this form at any of our studios	Sat 8 June	✓	✓	✓	✓	✓	✓	✓	✓	✓
	Sun 9 June	✓	✓	✓	✓	✓	✓	✓	✓	✓

Your CONTACT details (NAME plus TELEPHONE or EMAIL):

South Norfolk Art Trail

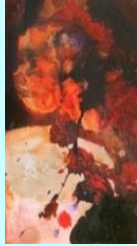
For artists' full details, go to <https://www.nnopenstudios.org.uk/brochure>

ANNA MARTIN (213)

I am a rug-designer/ maker. I create bespoke art for the floor. My specialism is gun tufted rugs



CAROLINE EVANS (217)



Landscape inspired abstract work which seeks to question place, time & memory

FRANCES OVERY (225)



Contemporary textile art & stitch

CLARISSA UPCHURCH (226)

Urban, natural landscapes & cloud forms expressed through large conte drawings, mono prints & paintings

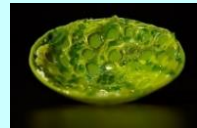


VERA COOKE (227)

Mosaics picassiette, vibrant unique artworks for home and garden, using broken china, tiles, jewellery, found objects



PENNY COULT (232)



Fused glass artist & sculptor figurative, iridescent vessels, plaques, bowls, animal casts, screenprints, splashbacks

CAROL HARDCASTLE (233)

Freehand machine embroidered & appliqué fabric character designs made with cotton, linen & Harris tweed



CLARE INSALL (234)



Portraits by commission

Contemporary figurative & townscape compositions, mainly in watercolour. People & pets.

CAROLINE TAYLOR (235)



Drypoint prints – domestic objects, things & memories

BROWICK ROAD PRIMARY & NURSERY SCHOOL (237)

We exhibit artwork from every child in our school & nursery, showing the range of art & design taught across the curriculum.

Please come & visit our children's great art

